



Chubb

QUICKFIT FIRE HOSE REEL

MODEL: 4102/01

The following items form the standard Hose Reel package:-

- (a) Hose Reel assembly complete with hose and Inlet Pipe.
- (b) Installation instructions
- (c) Kit in bag:
 - (i) Guide Arm
 - (ii) Union Barrel, 25mm
 - (iii) Ball Valve 25mm fitted with nozzle lock
 - (iv) Support Bracket
 - (v) Inlet Pipe Bracket

This hose reel is designed for fire fighting purposes only and meets the requirements of AS1221. The use of this hose reel for any other purposes will void the warranty. This hose reel is not suitable for use as a wash down hose reel. When not in use, the hose reel should be restored to its as installed condition with the ball valve in the off position.

Operating Specifications:

Maximum working pressure: 1MPa (145psi)
 Flow Rate: 27L/min (minimum) @ 220kPa inlet pressure
 Minimum working Flow Rate: 20L/min.

This hose reel should be maintained in accordance with AS1851 and serviced every six months.

12 Month Limited Warranty:

Chubb Fire Safety Limited ('Chubb') warrants to the original consumer purchaser each new fire hose reel to be free from defects in material and workmanship under normal use and services for a period of twelve (12) months from the date of purchase. Chubb agrees to repair or replace, as its option, any inherently defective fire hose reel provided that it is returned with postage prepaid and with proof of the purchase date to Chubb. This warranty does not cover damage resulting from accidents, misuse, your neglect or incorrect use of the product, abuse or general wear and tear. The purchaser's attention is drawn to rights it may have under the Trade Practices Act 1974 (CTH) and similar state and territory legislation which cannot be excluded. Subject to those non-excludable rights and provisions and the above warranty, Chubb will not be liable for any injury to persons or damage to property or for any special direct or indirect or consequential loss or damage whatsoever and whether as a result of negligence or fault on the part of Chubb or its servants, agents, suppliers and contractors or otherwise arising out of or resulting from, whether directly or indirectly, the use, installation or maintenance of the fire hose reel and any warranties or representations are excluded unless given by Chubb in writing.

To the extent permitted by law, Chubb's aggregate liability under this arrangement, whether in contract, tort (including negligence) or otherwise, will be limited to AUD\$10,000. This limitation does not apply for any injury to, or death of, a person caused by Chubb's negligence.

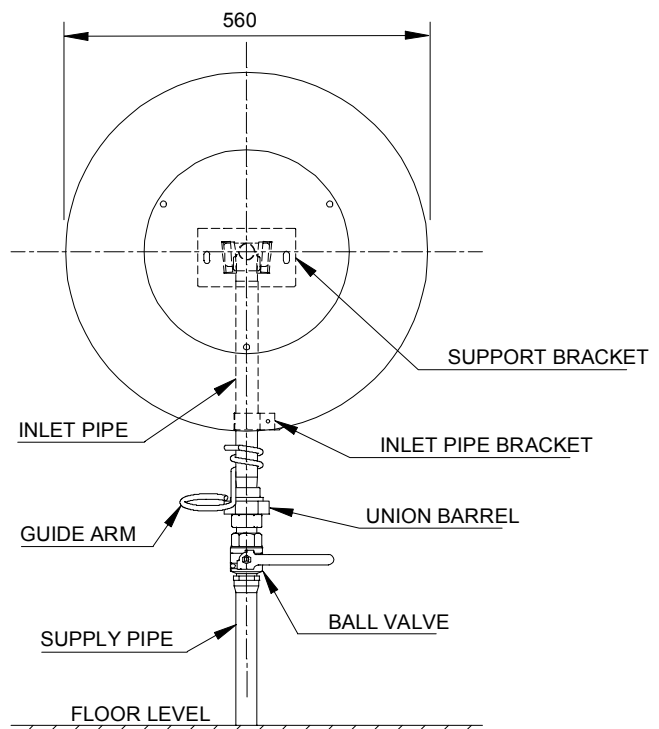
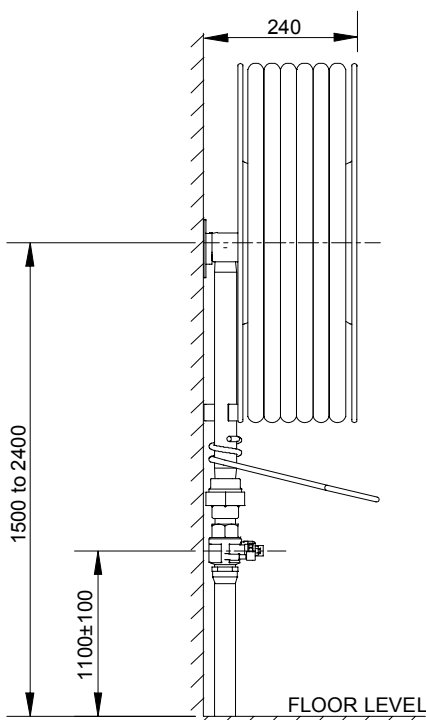
Notwithstanding anything else in this document, Chubb will not be liable for:

- (a) Any indirect, consequential or special or economic loss, cost, liability, damage or expense howsoever arising; or
- (b) Loss of profit, loss of use, loss of income, loss of rental or other benefit, loss of production, loss of actual or potential business opportunity or loss of reputation.

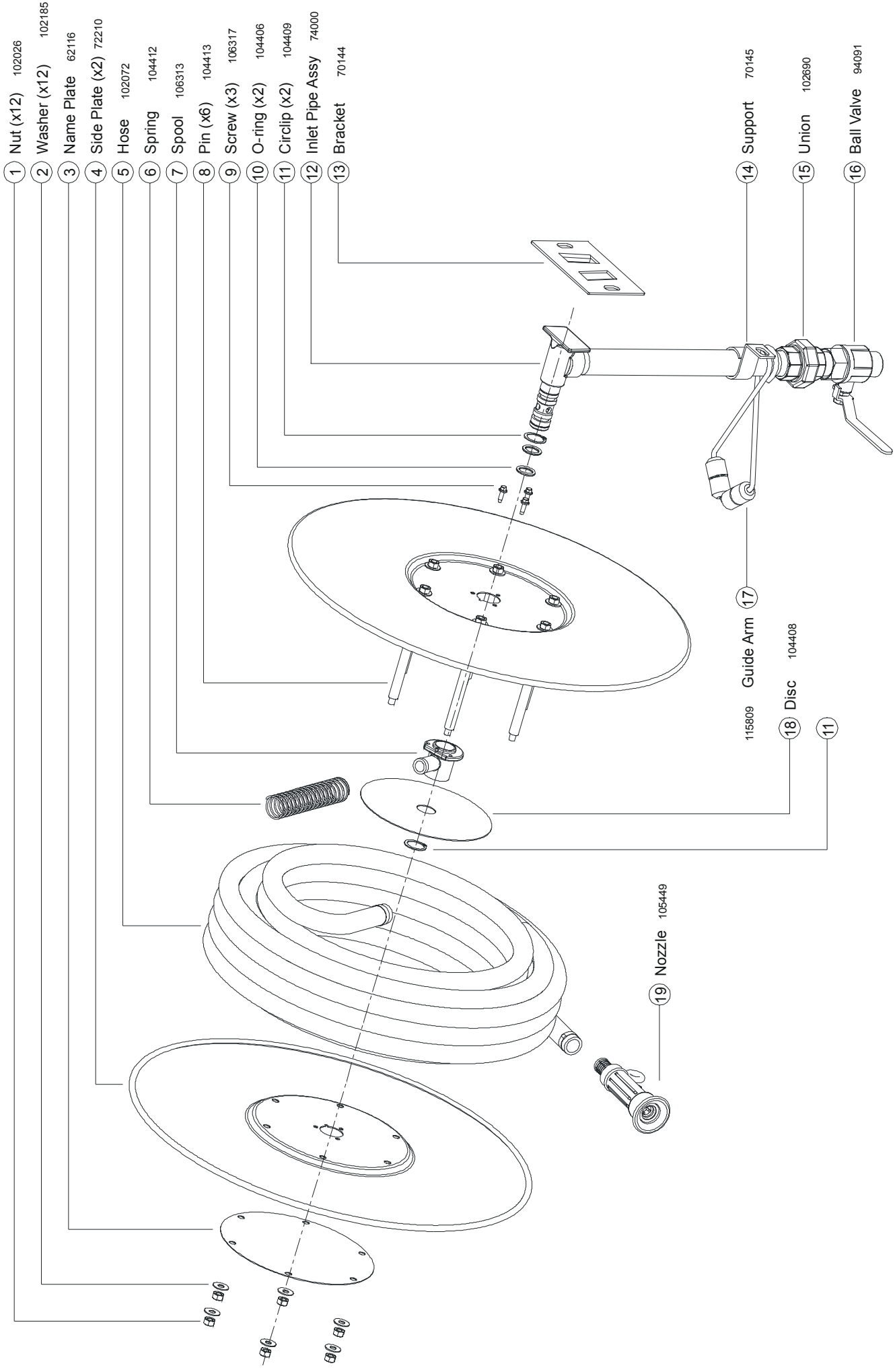
INSTALLATION PROCEDURE

Note: Installers should ensure that the Fire Hose Reel is installed in accordance with AS2441 "Installation of Fire Hose Reels". Non-compliance with this instruction will void warranty.

- (1) A suitable and readily accessible location should be selected. The surface should be suitable to withstand a horizontal pull on the reel of 1kN. The location should be clearly marked with a sign (not supplied). If being installed in a cavity or cabinet the depth of the cavity or cabinet should still allow the guide arm to protrude.
- (2) The point at which the Hose Reel is to be mounted is the horizontal centre-line on which the reel rotates. Mark this point 1500mm above floor level. Axis of reel can be mounted 1500mm to 2400mm above floor level, only when fitted with a longer inlet pipe to ensure centre of Ball Valve is 1000±100mm above floor level.
- (3) The Support Bracket should be placed centrally on the mark. Mark the fixing holes.
- (4) The fixing holes can be prepared and the bracket securely fixed by using the prescribed fixings as follows:-
 - (a) For softwood timber, type 17 screws x 14g minimum length into wood 37mm.
 - (b) For hardwood timber, type 17 screws x 14g minimum length into wood 25mm.
 - (c) For concrete, 10mm masonry anchors (e.g. Loxins) minimum length into concrete 50mm.
 - (d) For soft or hollow concrete, M10 rawls nuts or equivalent.
- (5) Attach Hose Reel to Support Bracket by lowering the Elbow Block behind the lugs of the Support Bracket.
- (6) Slide the Guide Arm over the Inlet Pipe and hold in place by attaching the female half of the Union Barrel provided.
- (7) Locate the Inlet Pipe Bracket over the Inlet Pipe and fix as per point (4).
- (8) The Ball Valve with the male half of the Union Barrel fitted should then be fitted to the supply pipe and the Union Barrel connected.
- (9) Pass the Nozzle through the Guide Arm, draw the hose to its full length, turn on the water at the valve and check discharge rate into a suitable container (minimum requirement is 20 litres per minute).
- (10) Check ease of hose withdrawal in any direction – maximum horizontal force to unwind a fully charged hose is not to exceed 100 Newtons (10.2kg).
- (11) Check for leaks and rewind hose in accordance with Name Plate instructions.



HOSE REEL INSTALLATION



HOSE REEL ASSEMBLY DETAIL