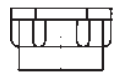
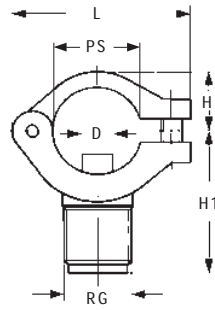


## ASSEMBLY ACCESSORIES

## ZPB



VAA 0380 D6B

## PIPE CLAMPS

ZPB series clamps allow nozzles to be assembled on manifolds in an easy, fast and professional way. Only one hole is required, no threading or welding, and a 3/8" male nipple is readily available for nozzle connection. The quality of polypropylene used for construction of our ZPB clamps offers good tensile strength at high temperatures, and low values of water absorption, assuring a secure assembly when in operation. A retaining nut moulded with the same material fits the nipple of all ZPB clamps.

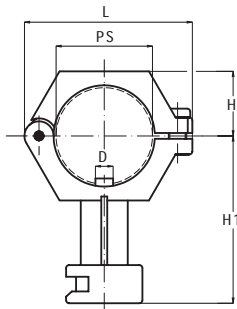
Max working temperature LT 80° C  
Max working pressure LP 8 bar

Materials Body D6 PP, chemically bonded fiberglass  
O-ring E8 NBR  
Metal parts B2 AISI 304 Stainless steel

Code	RG inch	PS inch	PD mm	D mm	H mm	H1 mm	L mm	W g
ZPB 0050 D6	3/8	1/2	20/22	7,6	16,0	36	44	20
ZPB 0075 D6		3/4	25/27	7,6	17,5	39	51	26
ZPB 0100 D6		1	32/34	10,8	21,0	46	61	30
ZPB 0125 D6*		1 1/4	40/43	12,0	30,0	54	85	75

\* Please note this model is also available with opposed 3/8" male outlet, ask for ZPE model data-sheet.

## ZPC



## BAYONET CLAMPS

ZPC series clamps are easily fastened onto a manifold and secured by means of a screw, offering the convenience of assembling a flat jet nozzle tip with a simple twist and maintaining the correct spray orientation. The flat jet orientation is set with a 10° deviation angle from the manifold axis to avoid jet overlapping. Designed and delivered as standard to match with PNR nozzle tips, two additional locknuts are available to match with tips from other manufacturers (Data Sheet on request)

Max working temperature LT 90° C  
Max working pressure LP 8 bar

Materials Body D82 PVDF, moulded  
O-ring E7 Viton  
Metal parts B3 AISI 316 Stainless steel

QUICK RELEASE  
COUPLING

Code	PS inch	PD mm	D mm	H mm	H1 mm	L mm	W g
ZPC 0050 D82	1/2	20/22	7,6	16,0	36	44	21
ZPC 0075 D82	3/4	25/27	-	17,5	40	50	25

ASSEMBLY ACCESSORIES

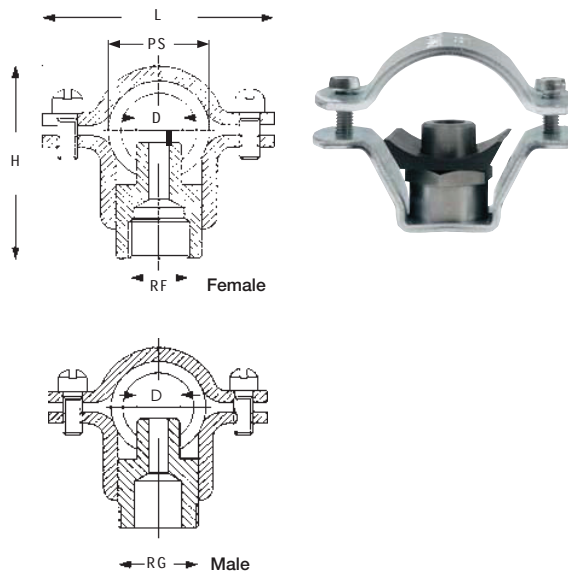
METAL CLAMPS

ZPM

ZPM clamp comprises two contoured pressings, a nipple and a gasket, the assembly being secured on the pipe by means of two screws: the tightening method allows for higher working pressures than those possible with plastic moulded clamps. Nipples of different materials and thread sizes are available. For a precise product identification please complete the clamp code as shown in the table below.

Max working temperature LT 80° C  
 Max working pressure LP 17 bar

Materials Body B2 AISI 304 Stainless steel  
 A8 Zinc coated steel  
 Screws B2 AISI 304 Stainless steel  
 Nipple B1 AISI 303 Stainless steel  
 T1 Brass  
 Gasket E0 EPDM



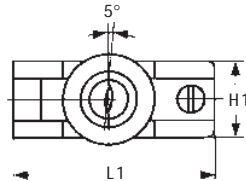
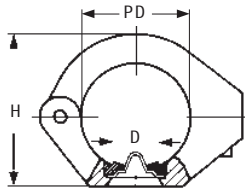
Code	PS inch	RF/RG inch	LP bar	LQ lpm	D mm	H mm	L mm
ZPM 0050 xxAW	1/2	1/8	17	11	7	40	49
ZPM 0050 xxBW		1/4					
ZPM 0050 xxUW		3/8				48	
ZPM 0075 xxAW	3/4	1/8	17	11	7	45	58
ZPM 0075 xxBW		1/4					
ZPM 0075 xxUW		3/8				53	
ZPM 0100 xxAW	1	1/8	17	11	7	45	65
ZPM 0100 xxBW		1/4					
ZPM 0100 xxUW		3/8				53	
ZPM 0125 xxYW	1 1/4	1/4	9	45	17	68	71
ZPM 0125 xxYW		3/8					
ZPM 0125 xxYW		1/2					
ZPM 0150 xxYW	1 1/2	1/4	9	45	17	72	90
ZPM 0150 xxYW		3/8					
ZPM 0150 xxYW		1/2					
ZPM 0200 xxYW	2	1/4	9	45	17	85	100
ZPM 0200 xxYW		3/8					
ZPM 0200 xxYW		1/2					
ZPM 0250 xxYW	2 1/2	1/4	9	45	31.5	110	118
ZPM 0250 xxYW		3/8					
ZPM 0250 xxYW		1/2					

CODE COMPLEMENTS Replace xx and YW in the above codes as shown below

XX	For clamp material	Y	For nipple thread	W	For nipple material
A8	Zinc coated steel	A	1/8" BSP Fem	A	Brass
B2	AISI 304	B	1/4" BSP Fem	B	AISI 303
		C	3/8" BSP Fem	C	AISI 316
		D	1/2" BSP Fem		
		U	3/8" BSP Male		

## ASSEMBLY ACCESSORIES

## ZPH



## FILTERPRESS CLAMPS

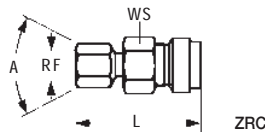
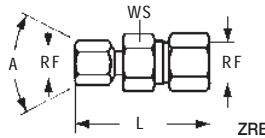
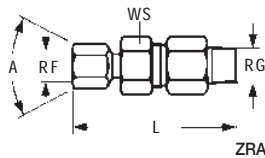
ZPH clamps have been specially designed to allow mounting the clog resistant flat jet disc nozzles of the series GE in a fast and economical way. GE nozzles are the best solution for washing band filter cloths used in mud drying filter presses. The clamp design lets the back part of the nozzle protrude inside the pipe, in order to enable the cleaning of the orifice by means of a rotating stainless steel brush.

Max working temperature	LT 80° C
Max working pressure	LP 7 bar
Fitting dimensions	Outer pipe diameter 50 mm
	Inner pipe diameter 47 mm
	Feed hole 19 mm

Materials	Clamp D6	PP, chemically bonded fiberglass
	Pin, bolt B3	AISI 316 stainless steel

Code	PD mm	D mm	H mm	H1 mm	L1 mm
ZPH 0150 D6	50	19	70	34	91

## ZRA



## SWIVEL JOINTS

ZRA swivel joints fit a wide range of nozzles, while maintaining a rational piping lay-out. Fitting and adjustment are easily performed, tightening the hexagonal screw cap. A female thread accepts the nozzle, and a male threaded connection fits onto the feed line.

Max working pressure	LP 21 bar
Materials	B31 AISI 316L Stainless steel
	T1 Brass

## ZRB/ZRC

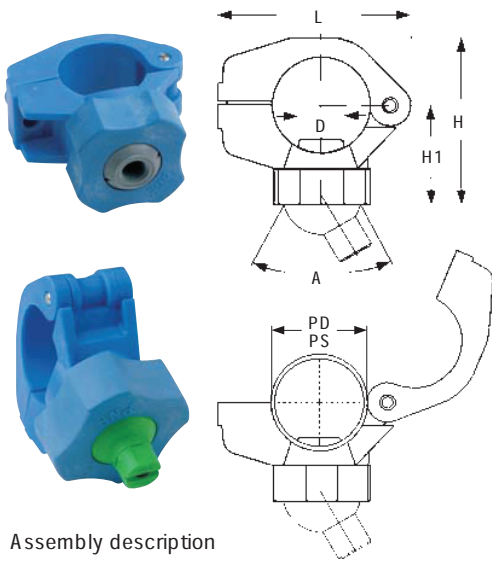
This swivel joint type can also be supplied with a female pipe connection (code ZRB) or a weld on connection (code ZRC), with the same range shown in the ZRA table beside.

Data Sheet for ZRB and ZRC types available on request.

Code	RG poll	RF poll	L mm	A deg	WS mm	W g
ZRA 1212 xx SB	1/8	1/8	38	50	22	57
ZRA 2525 xx SB	1/4	1/4	57			75
ZRA 2626 xx SB	1/4	1/4	67	60	27	147
ZRA 3826 xx SB	3/8	1/4	67			150
ZRA 3838 xx SB	3/8	3/8	70			155
ZRA 5050 xx SB	1/2	1/2	74	40	27	186
ZRA 7575 xx SB	3/4	3/4	92		40	468

## ASSEMBLY ACCESSORIES

## ZPF



## Assembly description

ZPF A125 D6

VAB 0125 D6

HGQ 2195 D5/ZBA B038

## PIPE CONNECTION

ZPF clamps are available with three different nipple sizes (D1) with diameters of 14.3, 17.0 and 20 mm. Single product codes are shown in the table beside.

## SWIVEL NOZZLE CLAMPS

ZPF clamps, first introduced by PNR, have revolutioned the design of modern surface pre-treatment plants. They combine the convenience of nozzle orientation and the easiness of rapid mounting. It is possible to fit a broad range of nozzles with jets correctly oriented by just drilling one hole without welding a nipple to the manifold, and fixing the clamp with one screw. Checking and replacing of the nozzles is quick, and easily performed without the need of tools. ZPF can be fitted with swivel body moulded nozzles, or with female threaded spheres to accept any metal nozzle with threads between 1/8" and 1/2". For added strength, 1 1/2" clamps have a stainless steel threaded captive nut moulded into the body.

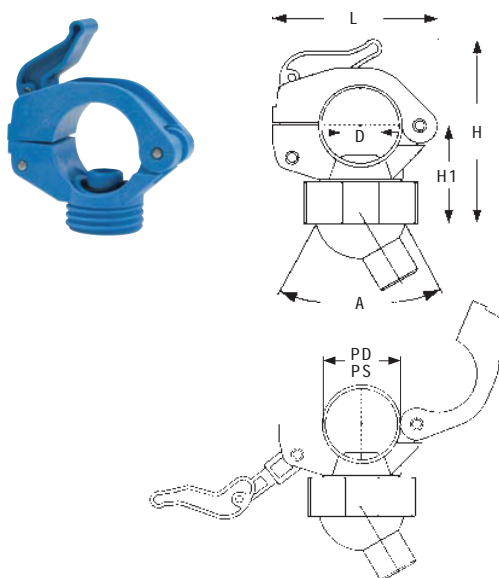
Max operating temperature LT 80° C

Max operating pressure LP 3 bar

Materials Body D6 PP, chemically bonded fibreglass  
Pin & bolt B3 AISI 316 Stainless steel  
O-ring E8 NBR

Code	PS inch	PD mm	D mm	H mm	H1 mm	L mm	A deg	W g
ZPF A125 D6	1 1/4	41/43	20,0	83	54	84	40	85
ZPF B125 D6			17,0					
ZPF C125 D6			14,0					
ZPF A150 D6	1 1/2	46/49	20,0	90	57	90	40	88
ZPF B150 D6			17,0					
ZPF C150 D6			14,0					

## ZPQ



As easy as 1, 2, 3...just wrap the clamp around the pipe and lock the lever...you're done !

## CAM &amp; LEVER CLAMPS

ZPQ clamps are the most modern product developed for application in surface treatment plants: they reduce significantly the time and labour required for maintenance disassembling and cleaning operations. A patented cam and lever system quickly fits the clamp onto the pipe without tools. The clamp design, where body cam and lever are linked by stainless steel pins, avoids any risk of losing single parts during assembly and disassembly. To avoid any leakage and consequent dirt buildup on the swivel ball, a unique soft seal is provided on the ball seat. ZPQ clamps use the same retaining nut and sphere nozzles as the other PNR clamps.

Max working temperature LT 70° C

Max working pressure LP 4 bar (tested at 20° C)

Locknut code VAB 0125 D6

Materials Plastic parts D6 PP, chemically bonded fiberglass  
Pins B3 AISI 316 S stainless Steel  
O-ring E8 NBR  
Seal D22S Soft polypropylene

Code	PS inch	PD mm	D1 mm	H mm	H1 mm	L mm	A deg	W g
ZPQ A125 D6	1 1/4	42/43	20,0	93	41	84	40	87
ZPQ B125 D6			17,0					
ZPQ A150 D6	1 1/2	48/49	20,0	96	44	95	40	97
ZPQ B150 D6			17,0					

ASSEMBLY ACCESSORIES

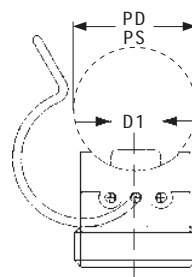
SPRING PIPE CLAMPS

ZPL clamps are an efficient and price conscious solution for fitting nozzles into light duty plants. They use the same range of accessories (retaining caps, nozzle spheres, threaded spheres and o-rings) as the ZPF clamps, which allows for maximum flexibility in system design while reducing stock to a minimum. The clamp is fitted onto the pipe quickly and without any tools locking the profiled spring around the pipe, minimizing the time required when installing or servicing the plant.

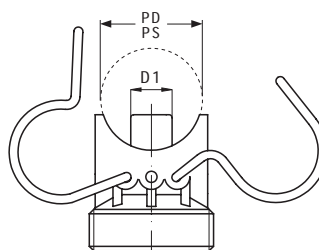
Max working temperature LT 80° C  
 Max working pressure LP 2 bar  
 Locknut Code VAB 0125 D6

Materials Body D6 PP, chemically bonded fibreglass  
 Spring N1 AISI 302 Stainless steel, heat treated  
 O-ring E8 NBR

Code		PS inch	PD mm	D mm	A deg	W g
Single spring	Double spring					
ZPL C100 D6	ZPN C100 D6	1	34/32	14,0	40	46/65
ZPL A125 D6	ZPN A125 D6			20,0	40	
ZPL B125 D6	ZPN B125 D6			17,0		
ZPL C125 D6	ZPN C125 D6			14,0		
ZPL A150 D6	ZPN A150 D6	1 1/2	49/46	20,0	40	
ZPL B150 D6	ZPN B150 D6			17,0		
ZPL C150 D6	ZPN C150 D6			14,0		



ZPL



ZPN



ZPN

For larger manifold sizes and when standpipes are subjected to excessive vibrations, we recommend using the double spring ZPN type clamp assuring a firmer connection on the pipe. Products code are listed in the table beside.

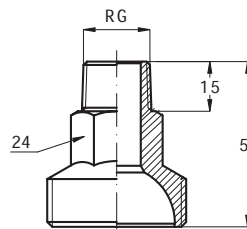
THREADED NIPPLE

ZLF threaded nipple accepts all HG nozzles and ZBA threaded spheres and is designed to fit where standard clamps cannot be used or onto the feed manifold. Available with two different thread sizes, and with European or American threads, is made out of the same high quality polypropylene as all our pre-treatment products

Max working temperature LT 80° C  
 Max working pressure LP 4 bar  
 Locknut code VAB 0125 D6

Material D6 PP, chemically bonded fibreglass

Code	RG	RG	W
	inch BSPT	inch NPT	
ZLF A038 D6	3/8	-	15
ZLF B038 D6	-	3/8	
ZLF A050 D6	1/2	-	
ZLF B050 D6	-	1/2	



Assembly description

- VAB 0125 D6
- ZLF A050 D6
- HGQ 2155 D5



ZLF